



Richards-Wilcox

Engineered For Life

Section 8 HEAD & DRUM PLATES

www.rwdoors.ca • 1-800-667-1572 • 5100 Timberlea Blvd, Mississauga, ON

HEADPLATES



425-1011
425-1010

425-1013
425-1012
425-1017
425-1016

436-0074
436-00745

425-0137
425-0138

425-1018
425-1019

PART NUMBER		DESCRIPTION	WEIGHT	DIMENSIONS		
LH	RH			WIDTH	HEIGHT	LEG
425-1011	425-1010	2" SL / HL / LHF	4.82 lb / ea	6 3/8	24	2 1/2
425-1013	425-1012	3" 13 ga SL / HL to 120"	6.256 lb / ea	6 7/8	26	3 1/8
425-1017	425-1016	3" 11 ga SL / HL to 120"	8.335 lb / ea	6 7/8	26	3 1/8
425-1026	425-1025	3" 11 ga SL / HL to 120" used w/ 2" ADCA or clip angle	7.34 lb / ea	6 7/8	26	2
436-0075	436-0074	3" 11 ga - HL 120"+ for 6375-164 / 800-120 drums	6.79 lb / ea	6 7/8	20 1/2	3 1/8
425-0138	425-0137	2" LH Rear	4.8 lb / ea	5	17 1/2	2 1/2
425-1018	425-1019	3" LH Front or Rear	5.78 lb / ea	6	22 3/4	3 1/8

LH/RH viewed for steel jambs



Richards-Wilcox

Engineered For Life

PARTS CATALOGUE HEAD & DRUM PLATES

www.rwdoors.ca • 1-800-667-1572 • 5100 Timberlea Blvd, Mississauga, ON

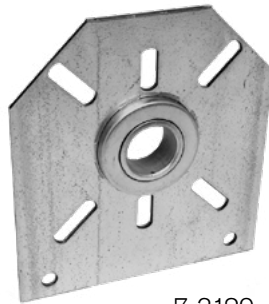
CENTRE PLATES



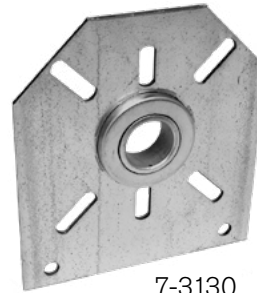
950-167B



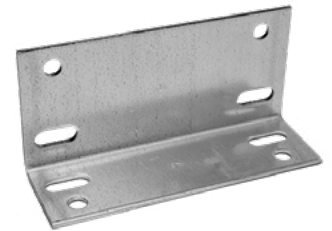
950-201
950-202
950-203
950-204



7-3129



7-3130



432-0016
432-0017

PART NUMBER		DESCRIPTION	WEIGHT		DIMENSIONS		
LH	RH				WIDTH	HEIGHT	LENGTH
950-167B		for 400-144 / 400-54 drums max 3-3/4" ID	0.47	lb / ea	5 3/4	4	1 5/8
950-203	950-204	11 ga Centre Plate 3-5/16" to 6-7-8" off-set	1.05	lb / ea	8 13/16	5 1/4	1 5/8
950-201	950-202	8 ga Centre Plate 3-5/16" to 6-7-8" off-set	1.43	lb / ea	8 13/16	5 1/4	1 5/8
7-3129		1" Centre Plate w/ Bearing	1.57	lb / ea	6	6 1/2	
7-3130		1-1/4" Centre Plate w/ Bearing	1.718	lb / ea	6	6 1/2	
432-0016		5"/6" OS Centre Plate Support Angle	1.18	lb / ea	3 1/8	6 1/2	2 1/8
432-0017		7-3/8" OS Centre Plate Support Angle	1.18	lb / ea	4 1/2	6 1/2	1 3/4

LH/RH refers to hand of spring that is mounted



www.rwdoors.ca • 1-800-667-1572 • 5100 Timberlea Blvd, Mississauga, ON

CENTRE PLATES - SPRING FAILURE DEVICE

950-161
950-162
950-163
950-164



950-165



PART NUMBER		DESCRIPTION	WEIGHT	
LH	RH			
950-161	950-162	Spring Failure Device 1" Bore Used for 3-3/8"	4.7	lb / ea
950-163	950-164	Spring Failure Device 1 1/4" Bore Used for 3-3/8"	4.7	lb / ea
950-165S		Spring Failure Extension Bracket For 4-3/8" & 5" off-set	1/2	lb / ea
950-165L		Spring Failure Extension Bracket For 6" off-set	1/2	lb / ea