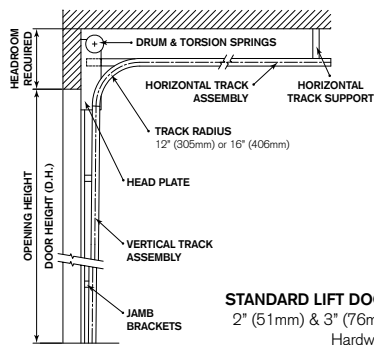
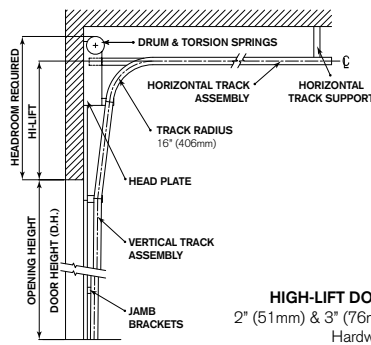


CLEARANCE & MOUNTING REQUIREMENTS

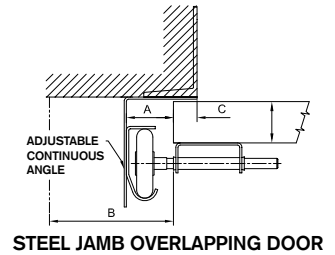
DOOR STYLE	HARDWARE SIZE	HEADROOM REQUIRED	TRACK CURVE RADIUS	JAMB DETAILS			
				A	B	C	D
STANDARD LIFT	2" (51)	13" (330) to 19-1/2" (495)	12" (305) or 16" (406)	1-1/2" (38)	3-1/2" (89)	1" (25)	5" (127)
	3" (76)	18" (457), 19" (482) or 21" (533)	16" (406)	2" (51)	4" (102)	1" (25)	6" (152)
HI-LIFT	2" (51)	H.L. + 7-1/2" (191) to H.L. + 10" (254)	16" (406)	1-1/2" (38)	3-1/2" (89)	1" (25)	5" (127)
	3" (76)	H.L. + 9-1/2" (241) to H.L. + 18-1/2" (470)	16" (406)	2" (51)	4" (102)	1" (25)	6" (152)
VERTICAL LIFT	2" (51)	D.H. + 22" (559)	-	1-1/2" (38)	3-1/2" (89)	1" (25)	5" (127)
	3" (76)	D.H. + {22" (559) to 27-1/2" (699)}	-	2" (51)	4" (102)	1" (25)	6" (152)
LOW HEADROOM FRONT SPRINGS	2" (51)	11" (279) to 11-3/4" (298)	12" (305)	1-1/2" (38)	3-1/2" (89)	1" (25)	5" (127)
	3" (76)	13" (330) to 15-1/2" (394)	16" (406)	2" (51)	4" (102)	1" (25)	6" (152)
LOW HEADROOM REAR SPRINGS	2" (51)	5" (127) to 5-1/2" (140)	12" (305)	1-1/2" (38)	3-1/2" (89)	1" (25)	5" (127)
	3" (76)	7-1/2" (191)	16" (406)	2" (51)	4" (102)	1" (25)	6" (152)
LOW HEADROOM VERTICAL LIFT	2" (51)	D.H. + 10" (254) or D.H. + 4" (102)	-	1-1/2" (38)	3-1/2" (89)	1" (25)	5" (127)
	3" (76)	D.H. + 10" (254) or D.H. + 4" (102)	-	2" (51)	4" (102)	1" (25)	6" (152)



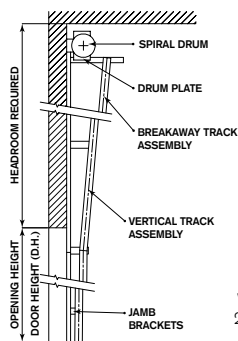
STANDARD LIFT DOOR
2" (51mm) & 3" (76mm)
Hardware



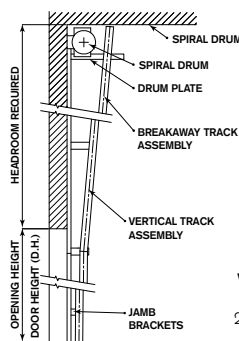
HIGH-LIFT DOOR
2" (51mm) & 3" (76mm)
Hardware



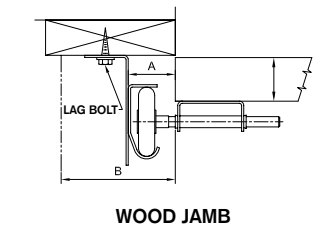
STEEL JAMB OVERLAPPING DOOR



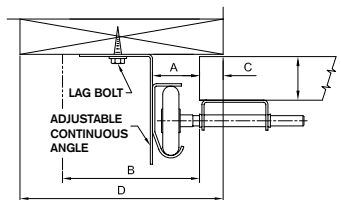
VERTICAL LIFT DOOR
2" (51mm) & 3" (76mm)
Hardware



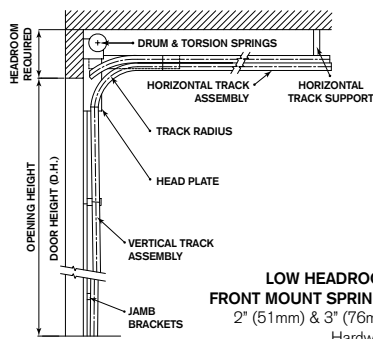
**VERTICAL LIFT DOOR
LOW HEADROOM**
2" (51mm) & 3" (76mm)
Hardware



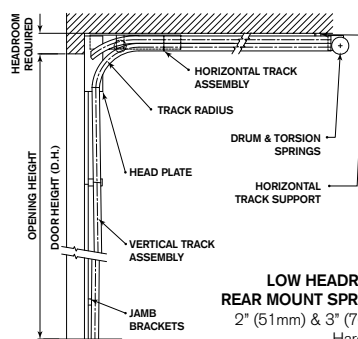
WOOD JAMB



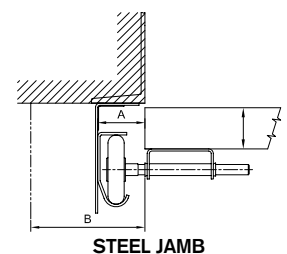
WOOD JAMB OVERLAPPING DOOR



**LOW HEADROOM
FRONT MOUNT SPRINGS**
2" (51mm) & 3" (76mm)
Hardware



**LOW HEADROOM
REAR MOUNT SPRINGS**
2" (51mm) & 3" (76mm)
Hardware



STEEL JAMB