



# Richardson-Wilcox

Premium Garage Doors



## Family Safe **Classic**

Beautiful, reliable, finger-protected garage doors.



# Engineered for life

## Instant curb-appeal.

Choose enduring quality and time-honoured style with any of our Classic panel options. Authentic woodgrain texture embossed on the panels has the look of wood but the strength of steel. Add designer decorative windows and choose from nine contemporary colours. You're guaranteed to find the perfect look to add value to your home and enhance its curb-appeal.



## Not just another pretty face.

We make beautiful doors. We also care that what's behind them will keep your door worry and maintenance-free for years to come. In business since 1912, we have an established reputation for exceptional quality and unparalleled customer service. Our hardware components are made to the highest industry standards. Our finger-protection system helps prevent injury by keeping fingers out of section joints, inside and out. We believe in our doors and we back that up in writing with our **LifeTimer™** warranties.



Patented finger-protection system helps prevent fingers from getting pinched between section joints, inside and out.



Section joints have a dual seal, ensuring a tight fit and reducing air flow.



3" (76mm) arctic-grade bottom weather seal helps protect your garage from the elements.

## Find your match.

Nine contemporary colours to compliment your home's exterior detail.



## Windows that wow.

Make a style statement with our wide selection of designer window options.\*

\* See the Richards-Wilcox Premium Windows brochure for complete details.



## What's your size?

We've got it. Our doors are available in all standard opening sizes for single and double car garages and can be made to almost any custom size.\*

Widths	ft	8, 9, 10, 12, 14, 16, 18
	mm	2438, 2743, 3048, 3658, 4267, 4877, 5486
Heights	ft	6'-6", 7'-0", 8'-0"
	mm	1981, 2134, 2438

\*Consult your Authorized Richards-Wilcox dealer for more information.



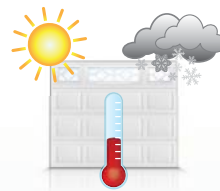
## Strength in numbers.

An insulated core ensures a strong, long-lasting door and provides an R value of 12.2 for exceptional thermal resistance.



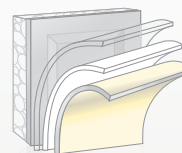
## Steel is the new wood.

Authentic woodgrain texture embossed on panels gives you the aesthetic of wood without the cost or hassle of maintaining it.



## Weather the storms.

Built to withstand many different weather conditions, our doors have a continuous polyurethane insulated core, arctic-grade bottom seal and dual-seal section joints to help reduce air flow and lower your energy costs.



## Built to last.

Door sections are constructed from high-strength, rust-resistant galvanized steel coated with a baked-on polyester paint finish, ensuring a durable and long-lasting door.



## Green comes standard.

Our Neufoam™ polyurethane insulation is zero ozone-depleting to help reduce greenhouse gas emissions. Woodgrain embossing simulates real hardwood without depleting our forests.



## LifeTimer™ Warranty

Lifetime warranty on the door section and hardware for as long as you own your home.

For additional features and benefits, talk to your Authorized Dealer or visit [rwdoors.com](http://rwdoors.com)

Door Tech, LLC  
5768 E. Gershmel Loop  
Palmer, Alaska 99645  
907.746.3900  
[www.DoorTechAlaska.com](http://www.DoorTechAlaska.com)

**Richards-Wilcox Canada**

5100 Timberlea Blvd. | Mississauga ON | Canada | L4W 2S5  
Toll Free: 1 (800) 667-1572 | Ph: 905.625.0037 | Fax: 905.625.0057

[www.rwdoors.com](http://www.rwdoors.com)

08.21.2013 - 1-0001C-FSCE